

REGIONAL SERVICE CENTER

FOR LATIN AMERICA
EDUCATIONAL MINISTRIES



*Serving education and support ministries
through consultation, coordination,
leadership and resource development,
administration and other services.*

Rod and Sherry Boyd, Directors
Regional Service Center
Apartado 0818-00792
Panama, PANAMA
Rod@larsc.net
www.larsc.net
(425) 608-0241 or 0204

1445 Boonville Ave.
Springfield, MO 65802

 ASSEMBLIES of GOD
WORLD MISSIONS





REGIONAL SERVICE CENTER

**A VISION FOR FACILITATING
REGIONAL SERVICES**



Missionaries Rod and Sherry Boyd
Serving Panama and Latin America

Rod and Sherry Boyd were appointed as missionaries to Panama in 1993 after 16 years of pastoral ministry and district Christian education leadership.

Rod and Sherry have served as coordinators for Latin America ChildCare in Panama since 1995. They serve on the LACC directory board as coordinators for Central America. Rod also serves as chairman of the LACC Data System Commission that provides regional support to sponsorship ministry.

Rod and Sherry direct the Resource and Advisory Center that serves the 900 Bible Schools and extensions in the 19 Spanish-speaking countries in Latin America and the Caribbean. Rod serves on the National Bible School Committee in Panama. He also serves as Advisor to Latin America's Bible Schools and Assistant Coordinator for Latin America Christian Education Services, the international Assemblies of God education organization.



God has placed on our heart the vision to open a REGIONAL SERVICE CENTER in Panama! This new CENTER will not only serve the needs of the ministries we direct, but will also assist other education and support ministries that have a regional impact in the 19 Spanish-speaking countries in Latin America and the Caribbean.

Our ministry is changing. In 1992, God called us to raise up Christian leaders in Panama. In the years following He has opened many doors of ministry throughout Latin America. Our continuing involvement with Panama's Bible schools and Christian schools has prepared us for our current regional ministries as Directors of the Resource and Advisory Center for Bible Schools in Spanish-speaking Latin America, and as Latin America ChildCare Coordinators for Central America, as well as providing regional support for the sponsorship ministry.

Our principal missionary contribution for the next decade will be to encourage, support and facilitate the joint efforts of the region's Spanish-speaking countries towards effective Christian education. Our strategic role is to teach those who teach and shape those who lead our educational ministries.

We are asking you to join the CENTER TEAM. As you read about the CENTER in the pages that follow, please catch our vision and passion, and pray for God's direction and provision.



A GROWING NEED FOR CONCERTED REGIONAL EDUCATIONAL SERVICES

Latin America is changing rapidly. Globalization, technology, communication, travel—these and other factors are accelerating this change. Latin American countries are tired of poverty. They recognize that education is key to improving society. But only *Christian* education produces true change through transformation of heart and mind.

National churches are maturing. After decades of explosive growth, our leaders are recognizing the importance of education at all levels to train workers in order to sustain growth. There is an awakening desire and expectation to work together to maximize our educational efforts to reach this continent and beyond. *Who will guide this new cooperation and interdependence?*

The face of missions is changing. Missionaries make disciples and teach them how to live for Christ. Although this basic goal of missions remains the same, methods and strategies must change. Christian Education has become a strategic priority for Latin America. All educational programs have grown exponentially in recent years. Nearly half of the 2,100 Assemblies of God Bible schools and extensions worldwide are in Spanish-speaking Latin America! Thirty years ago there were only a few Christian day schools in the region. Today there are more than 400 schools, ministering to over 100,000 children and youth.

The unfinished missionary task will be to anticipate, embrace and encourage this new emphasis on Christian education and support ministries, offering new paradigms, facilitating coordination and partnerships, working together to build upon the growth of the past to prepare Latin America for its worldwide impact in the future.

“Train a child in the way he should go, and when he is old he will not turn from it.”

—Proverbs 22:6



“If you don't like change, you're going to like **irrelevance** even less.”

—Ret. General Eric Shinseki
Former Chief of Staff, U. S. Army



REGIONAL SERVICE CENTER

**A COMPREHENSIVE MINISTRY
PLAN FOR REGIONAL SERVICES**



“And the things you have heard me say... entrust to reliable men who will also be qualified to teach others.”

—2 Timothy 2:2 (NIV)

“Give me the **children** until they are seven and anyone may have them afterward.”

—St. Francis Xavier



The Latin America **REGIONAL SERVICE CENTER** serves regional education and support ministries through consultation, coordination, leadership and resource development, administration and other services as needed for the 19 Spanish-speaking countries served.

The CENTER will provide facilities and support to assist regional education ministries in three areas:

- **Consulting and coordination** for strategic planning, communication, information and networking.
- **Leadership and resource development** through international events and education opportunities, research center, expanded ministry library (both print and electronic) and a technology and training center.
- **Administrative support** for operations, housing and technical services for a variety of ministries.

In the beginning, the CENTER will house the **Latin America ChildCare Panama** and **Central America** offices and the **Resource and Advisory Center** for Bible Schools. The facilities afforded by the new REGIONAL SERVICE CENTER will allow these ministries to expand and to strengthen their impact in the region.

In addition, sufficient facilities will be built to serve other education and support ministries that would desire to relocate to the CENTER. The CENTER will also be available to house building and ministry teams from the US working in Panama.



REGIONAL SERVICE CENTER



PANAMA: A CENTRAL LOCATION FOR REGIONAL SERVICES

We have chosen to build the REGIONAL SERVICE CENTER in **Panama City**. God has helped us to assemble an effective ministry team. The national church has invited the CENTER to base in Panama. Panama has a stable political environment with favorable tourist visa requirements, and a strong economy that uses the US dollar. Panama offers one of the safest environments in the region and is free from natural disasters.

Panama is a hub for air travel for the region. **Copa Airlines**, Panama’s national airlines, is affiliated with Continental, Northwest and Delta Airlines as a member of the SkyTeam alliance. Copa flies non-stop to 40 destinations in 21 countries from **Tocumen International Airport**, located 12 miles from downtown Panama City. The airport is completing a major expansion and modernization plan. It is the largest airport in Central America.

The **CENTER** will be located near the Tocumen International Airport to facilitate easy access for regional travel and international events.





REGIONAL SERVICE CENTER

FUNCTIONAL FACILITIES FOR REGIONAL SERVICES



The CENTER will be developed in three phases:

Phase ONE by December 31, 2010

Purchase two or more acres of land and construct a two-story, 15,000 square foot administrative and ministry building. The facility will include:

- Administrative and office space for education and support ministries
- Library, research and technology center
- Conference, kitchen and dining facilities for 75 to 150
- Training center, classrooms and conference rooms
- Reception area and lobby
- Two-bedroom guest apartment

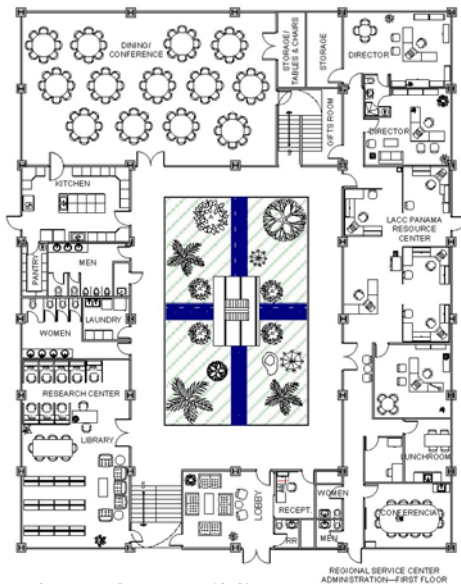
Phase TWO by 2012

Construction of a two-story, 13,000 square foot building for housing and meeting facilities for international events. This building will include:

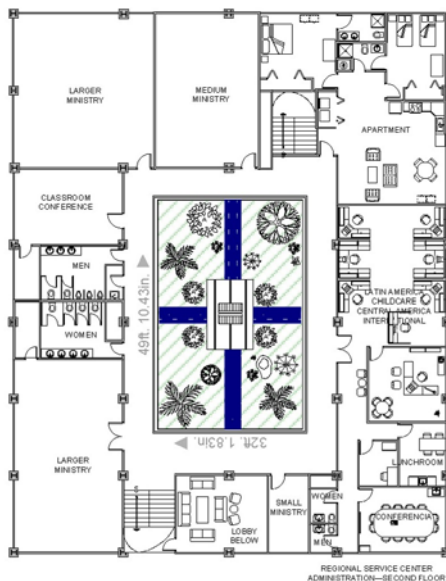
- Reception area and lobby
- 22 Rooms with three beds and private bath
- Meeting/Dining room for 40 with kitchen

Phase THREE by 2014

Construction of a two-story, 16,000 square foot building for conferences, ministry and additional administrative facilities as needed.



Phase ONE Building





**A CALL TO PARTNERSHIP FOR
REGIONAL SERVICES**

Please join us in praying for these specific needs:

- ◆ Locate two or more acres of buildable land (level with access and services) at a fair and favorable price near the international airport. We need God's guidance and intervention.
- ◆ Receive sufficient offerings to purchase land and make necessary improvements by July 1, 2008.
Budget: \$250,000
- ◆ Construction coordinator resident in Panama by the end of 2008.
- ◆ Offerings and construction teams from partner churches by December 31, 2010. We will need:
 - **Three PRIMARY partner churches** each to commit **\$50,000** and send two construction teams.
 - **Five MAJOR partner churches** each to commit **\$30,000** and send two construction teams.
 - **Seven BUILDING partner churches** each to commit **\$15,000** and send one construction team.

The **success** of the **REGIONAL SERVICE CENTER** will depend upon the partnership of generous churches and individual donors like you. Thank you for helping us fulfill this strategic vision to affect Latin America with the gospel of Christ.

The **REGIONAL SERVICE CENTER** is an approved **AGWM** project, #14295. Please send your offerings to the address to the right.

"Suppose one of you
wants to build a tower..."

—Luke 14:28



**Assemblies of God World Missions
LA Regional Service Center, Project 14295
1445 Boonville Ave.
Springfield, MO 65802**

Offerings may also be given by credit card on
the secure Assemblies of God website:
<https://secure1.ag.org/contributions>
Enter ministry name: PANAMA RES/ADV CTR



REGIONAL SERVICE CENTER

THE STATE OF EDUCATION IN SPANISH-SPEAKING LATIN AMERICA

“Go and **make disciples** of all nations... **teaching** them to obey”

—Matthew 28:19

“Be **transformed** by the **renewing of your mind.**”

—Romans 12:2

“If a man’s gift is... **teaching**, let him **teach.**”

—Romans 12:6-7

“**Education** is the most powerful weapon which you can use to **change the world.**”

—Nelson Mandela



Elementary Education. Although the vast majority of Spanish-speaking Latin American children have the opportunity to attend elementary school, (ranging from 87% in Nicaragua and Colombia to 98% in Mexico and Panama ¹), many do not stay in school. For example, only 85.3% of Panamanian elementary children continue on to 5th grade. In addition, the quality of education lags significantly behind most other developed regions. ²

Secondary Education. Many countries have raised the level of basic education from 6th grade to 8th or 9th grade in just the last few years. This change has provided expansion opportunities for our Assemblies of God schools in the region. Although secondary education is growing, it still remains low. For example, only 43% of Nicaraguan youth are enrolled in secondary school. ¹ These statistics may actually be optimistic. For example, the UNESCO enrollment rate for Panama is 64%, however, the statistic reported locally is 44%. ³

In addition, secondary students are among the lowest performers on international assessments of skills, not adequately preparing students for the rapidly changing job market.

Ministerial Education. There are 26,051 ministerial students studying in 287 Assemblies of God Bible schools and 704 extension sites. There are 49,170 ministers and workers, 39,099 churches and outreaches with 4,618,810 adherents. ⁴

¹ UNESCO Institute for Statistics, 1995 enrollment

² Raising Student Learning in Latin America, World Bank, 2008, xxi

³ Panama’s daily newspaper La Prensa, 11/4/07, 25A

⁴ AGWM, Latin America/ Caribbean Region Statistics, 2007